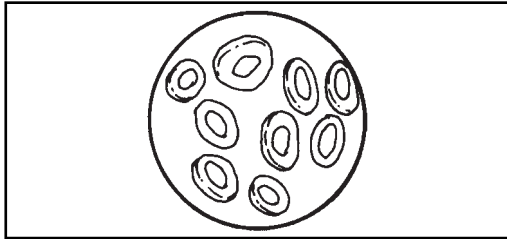


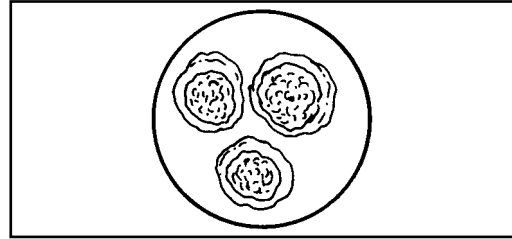
Charles Drew and the Study of Blood

Charles Drew did extensive research with blood. He discovered ways to isolate the parts of blood and store blood plasma that was needed for transfusions. In this activity, you will use reference tools for researching information about the four parts of blood. Take notes in the appropriate spaces below.



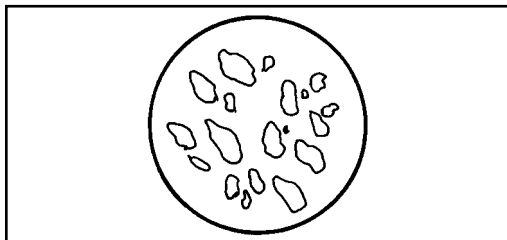
Red Blood Cells

| |
|--|
| |
| |
| |
| |
| |
| |
| |



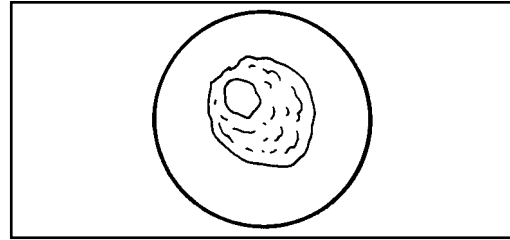
White Blood Cells

| |
|--|
| |
| |
| |
| |
| |
| |
| |



Platelets

| |
|--|
| |
| |
| |
| |
| |
| |
| |



Plasma

| |
|--|
| |
| |
| |
| |
| |
| |
| |

Answer Key

Suggested answers:

Red Blood Cells: called erythrocytes, constantly circulating in bloodstream, carry oxygen to tissues and lungs, carry out carbon dioxide, 4-6 million in microliter, mature cell has no nucleus, looks fat and doughnut shaped with a hole *White Blood Cells:* called leukocytes, produced in bone marrow, provide protection from disease and infection, 4000-10,000 in a microliter, has a nucleus, three types—neutrophils, lymphocytes, and monocytes *Platelets:* disk shaped; made from cells produced in bone marrow; allows blood to clot to stop bleeding; 150,000-400,000 in a microliter *Plasma:* is a liquid, mostly water; contains proteins, foodstuffs, and clotting substances; is the color of straw; makes up 55-65% of the blood