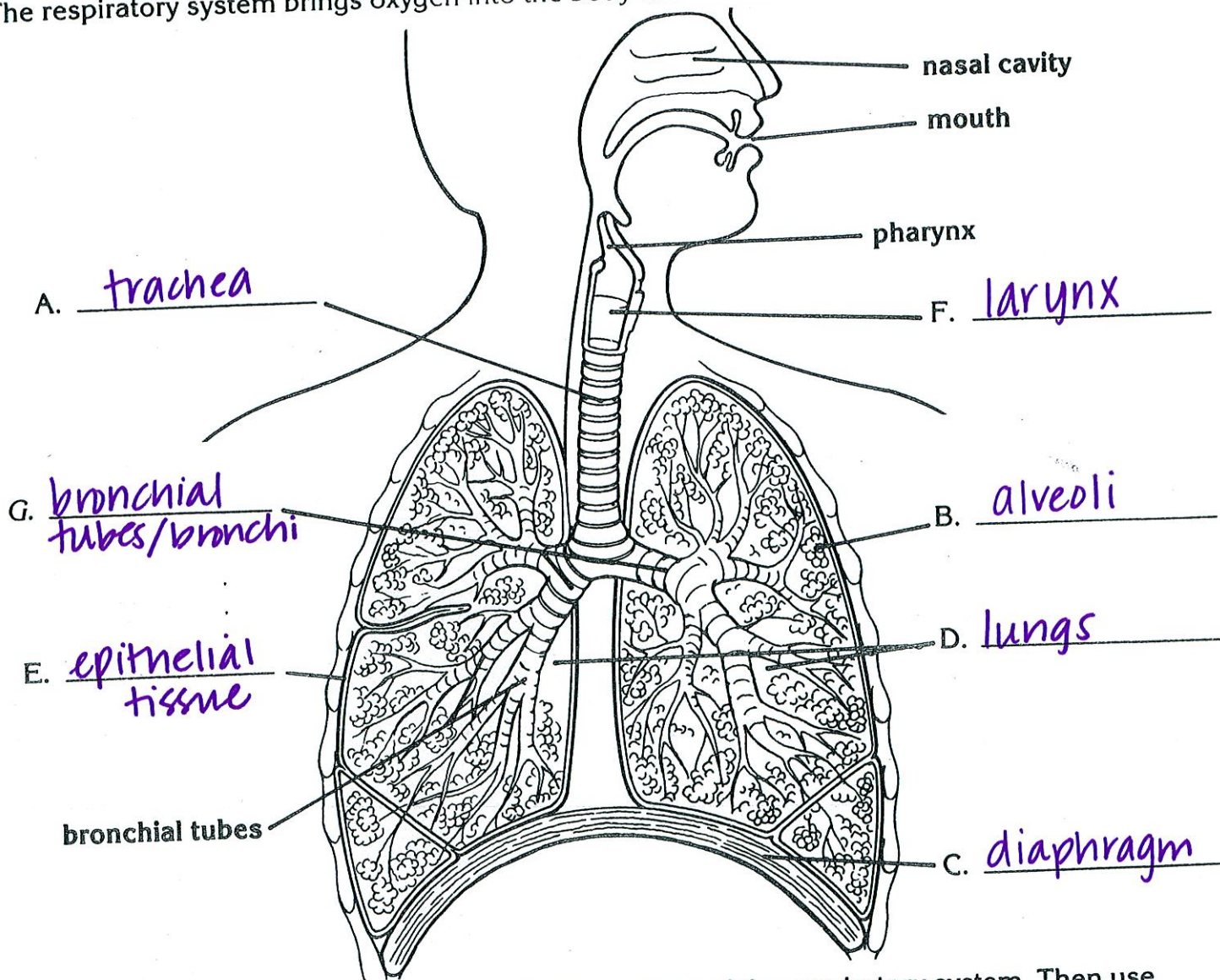


The Respiratory System

The respiratory system brings oxygen into the body and removes carbon dioxide and other gases.



- Study the diagram to correctly identify these parts of the respiratory system. Then use each answer to correctly label the diagram.

- the tube that connects the throat and the bronchial tubes trachea
- the grape-like clusters of air sacs within the lungs alveoli
- the large band of muscle that controls the size of the chest cavity diaphragm
- the two large lightweight respiratory organs of the body lungs
- the outer membrane which covers the lungs epithelial tissue
- the part of the respiratory system that helps us speak larynx
- the two branches of the windpipe bronchial tubes/bronchi

- Write True if the statement is true. Write False if the statement is false.

False The teeth are an important part of the respiratory system.
(you don't chew oxygen!) ☺